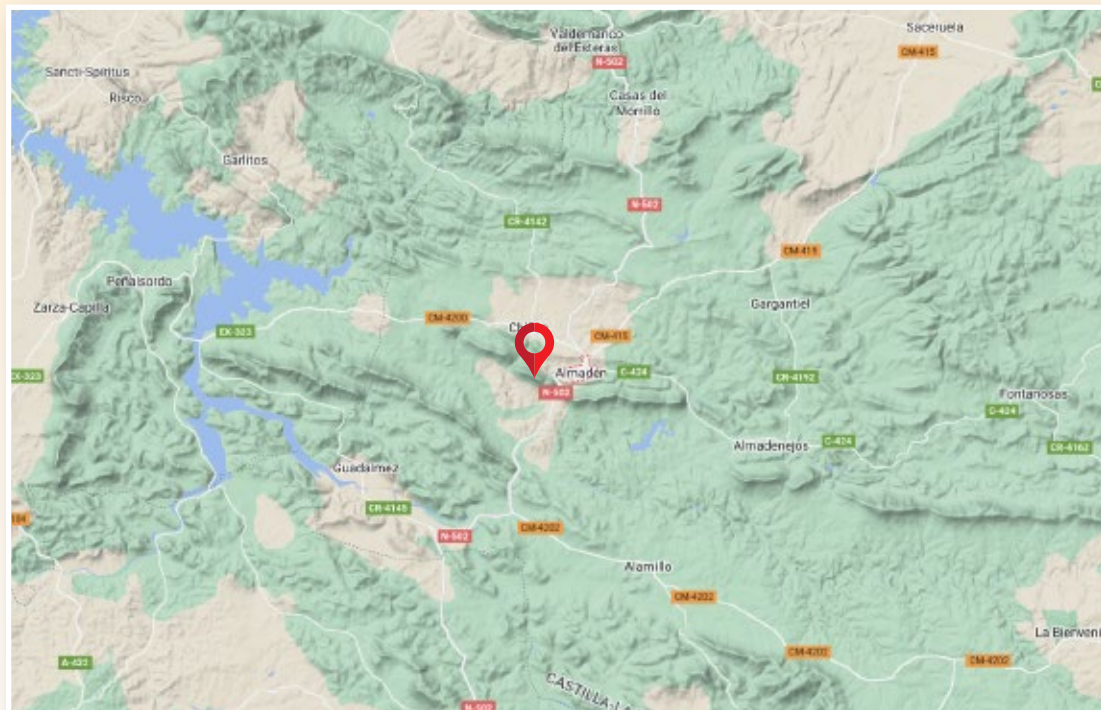




GOOGLE MAPS 38.770673, -4.856238



[www.proyectogeoparquevolcanesdecalatrava.es](http://www.proyectogeoparquevolcanesdecalatrava.es)



Ayuntamiento de Chillón



Ayuntamiento de Almadén

PROJECT

# CALATRAVA VOLCANOES GEOPARK. CIUDAD REAL

## ALMADÉN MINE AND MIRADOR DE LA VIRGEN DEL CASTILLO



- Magma
- Mercury
- Coal



Castilla-La Mancha



GEOPARQUE  
VOLCANES  
DE CALATRAVA  
CIUDAD REAL



DIPUTACIÓN DE  
CIUDAD REAL

The exceptional nature of this deposit lies in its unique geological characteristics, which have allowed the existence of high concentrations and large accumulations of ore. In fact, Almadén has its own metalogenetic model. In addition, it has a long mining history, conferring it a high archaeological-industrial and didactic value (Fig. 1).

The origin of the mercury mineralisation in the Almadén area is associated with a manifestation of deep-seated volcanism 430 million years ago in submarine conditions, which produced a series of highly explosive eruptions. In this scenario, the volcanic activity interrupted the sedimentation process of the sandstone, today known as Criadero Quartzite. The tectonics changed the position of the deposit - which was initially horizontal - to the present position, almost vertical, as it appears on the southern flank of the Almadén syncline (Fig. 2).

The Almadén mine was and is the largest known mercury deposit in the world and is considered a giant ore deposit, with a long productive history of more than twenty-four centuries. The

mercury deposit is of a stratiform type and as such is unique on a global scale, as one third of all the mercury ever used by mankind has been extracted from it (Fig. 3).

The viewpoint of the Virgen del Castillo hermitage offers an excellent panoramic sight of the geological environment (Fig. 4).

This geosite belongs to a territory declared as World Heritage by UNESCO, and defines one of the fundamental geological singularities of this project "Geoparque Volcanes de Calatrava. Ciudad Real". It is included in the IGME list of geological sites of international relevance - Geosite MM001- and -LIG C1003- "Almadén mercury mineralization and Armorican quartzite of Virgen del Castillo" as well as in the list of the 100 First Geosites worldwide ("geological heritage site") of the International Union of Geological Sciences.



Alúdeles or Bustamante ovens - Fig. 1

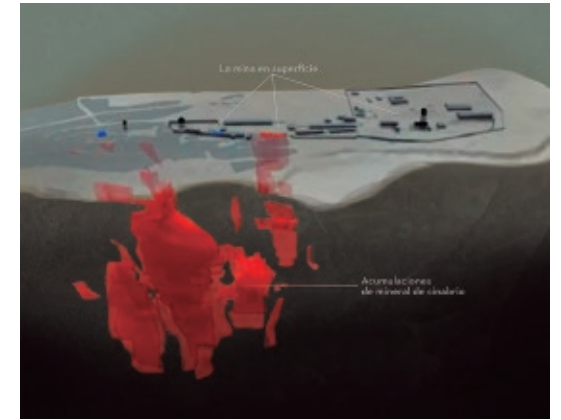
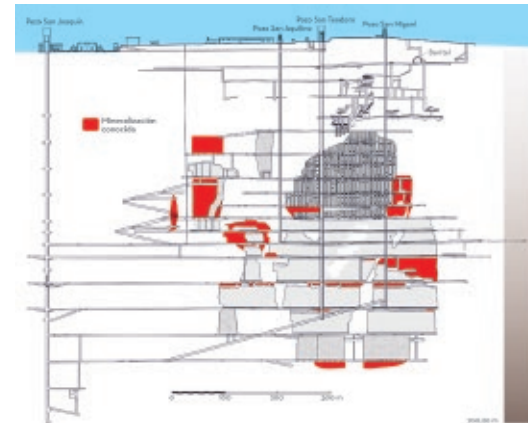


Fig. 2



Based on F. Palero 2012 - Fig. 3



Fig. 4