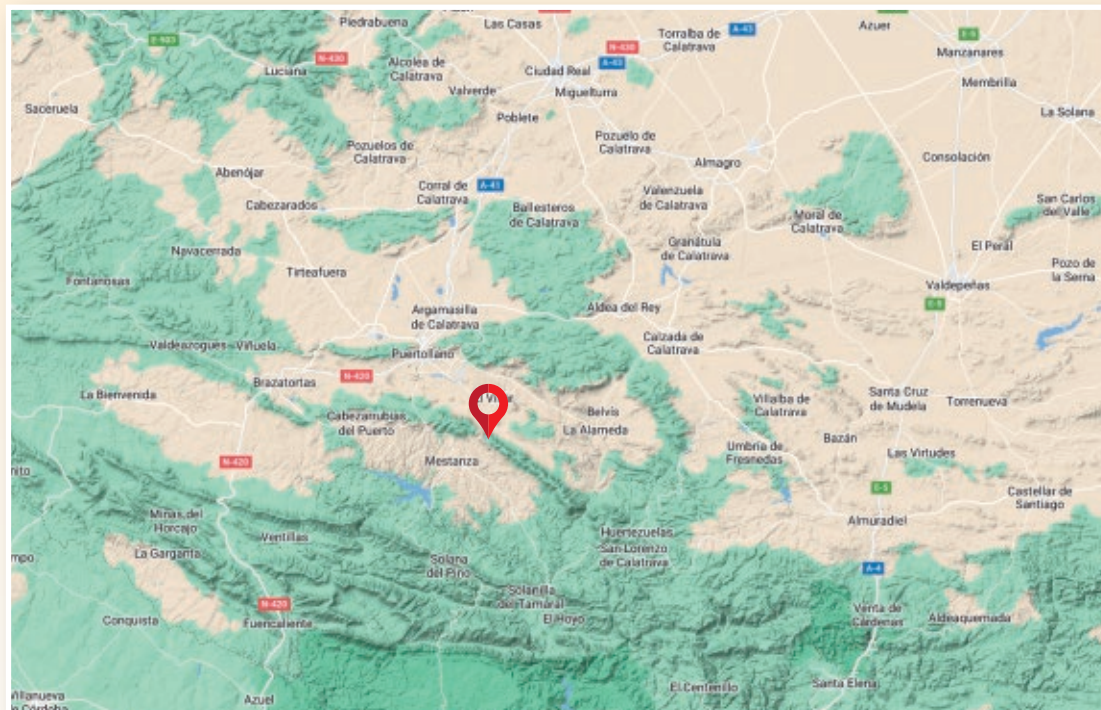




GOOGLE MAPS 38.597762, -4.024174



[www.proyectogeoparquevolcanesdecalatrava.es](http://www.proyectogeoparquevolcanesdecalatrava.es)



Ayuntamiento de Mestanza

PROJECT

# CALATRAVA VOLCANES GEOPARK. CIUDAD REAL

## LAGUNA DE LA ALBERQUILLA NATURAL MONUMENT



- Magma
- Mercury
- Coal



Castilla-La Mancha





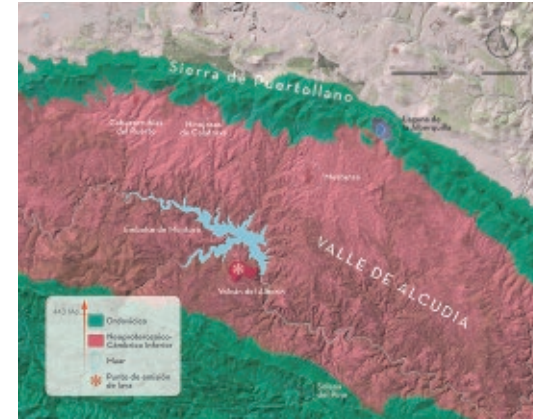
Surrounded by peaks of over a thousand metres, the Alberquilla Volcanic Lagoon is a very unique setting that offers an impressive panoramic view of the Alcuia Valley; the valley has been carved out by the fluvial activity of the Montoro River, as well as the surrounding sierras. It is the only volcanic lagoon “hanging” on the upper part of a mountain range and is one of the southernmost maars located in the Central Volcanic Region of Calatrava (Fig. 1).

The Alberquilla maar is a crater resulting from an eruption in which water interacts with magma. Successive deposits originated, creating a ring-shaped structure by the materials that are radially displaced from the centre of the crater (Fig. 2). It developed on a very hard and ancient substratum of Palaeozoic quartzite rocks. This maar erupted thanks to two fracture lines in the terrain of the Sierra de Puertollano. On the inner

slopes of the maar there are accumulations of quartzite blocks, and there are still remains of the ring formed by the materials dislodged by the eruption. The volcanic materials found in the crater are basalts.

Depending on the time of year and the amount of rainfall, the crater generates a temporary lagoon due to the accumulation of rainwater (Fig. 3).

This volcanic edifice is listed by the IGME as a Site of Geological Interest -LIG TM158- “Plio-Pleistocene Maar of La Alberquilla”. It is protected as a Natural Monument and included in the Natura 2000 Network as a Special Area of Conservation of the Volcanic Lagoons of Campo de Calatrava; this site is also integrated in the Natural Park of the Alcuia Valley and Sierra Madrona.



Work derived from Mapa-LiDAR 2019 CC-BY 4.0 scne.es - Fig. 1

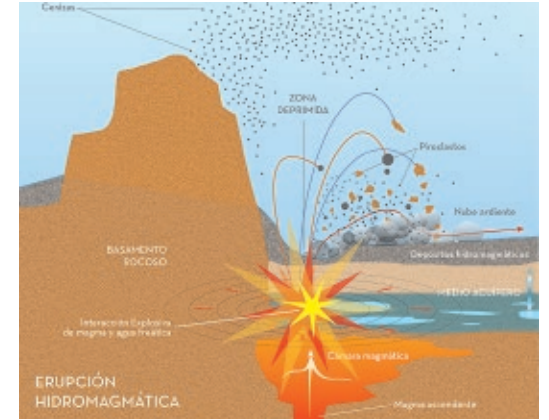


Fig. 2



Fig. 3