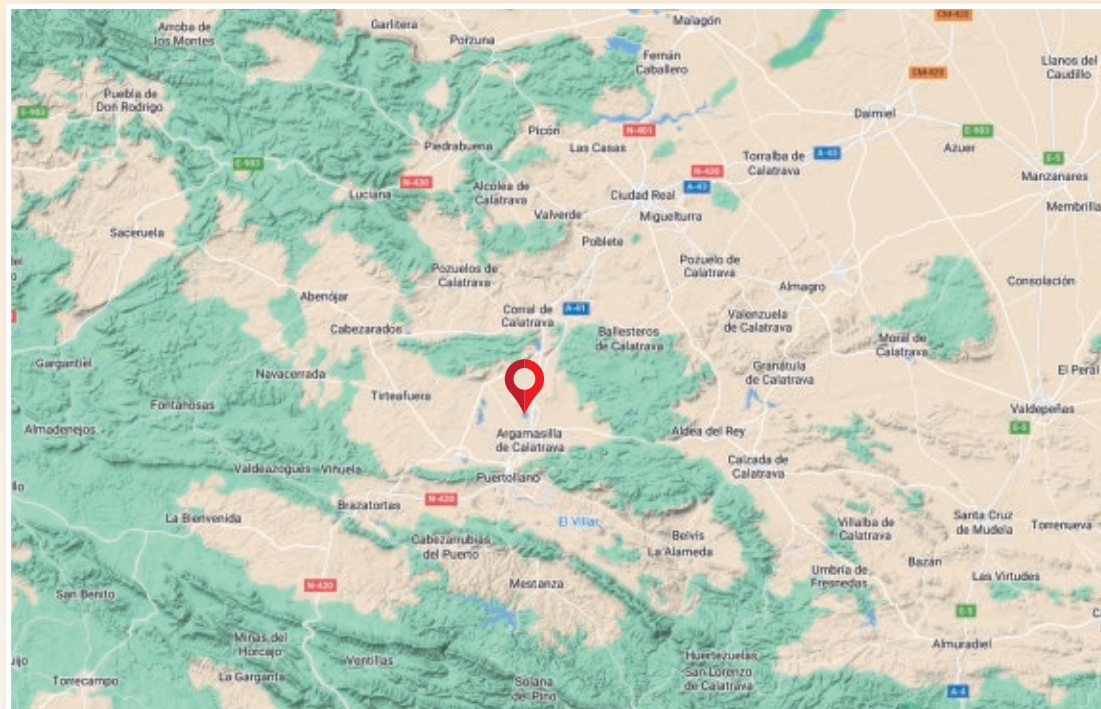




GOOGLE MAPS 38.752599, -4.087898



www.proyectogeoparquevolcanesdecalatrava.es



Ayuntamiento de Argamasilla de Cva.



Ayuntamiento de Villamayor de Cva.

PROJECT CALATRAVA VOLCANES GEOPARK. CIUDAD REAL

CABEZA PARDA, HORMIGONEROS AND LAGUNA BLANCA



- Magma
- Mercury
- Coal



Castilla-La Mancha





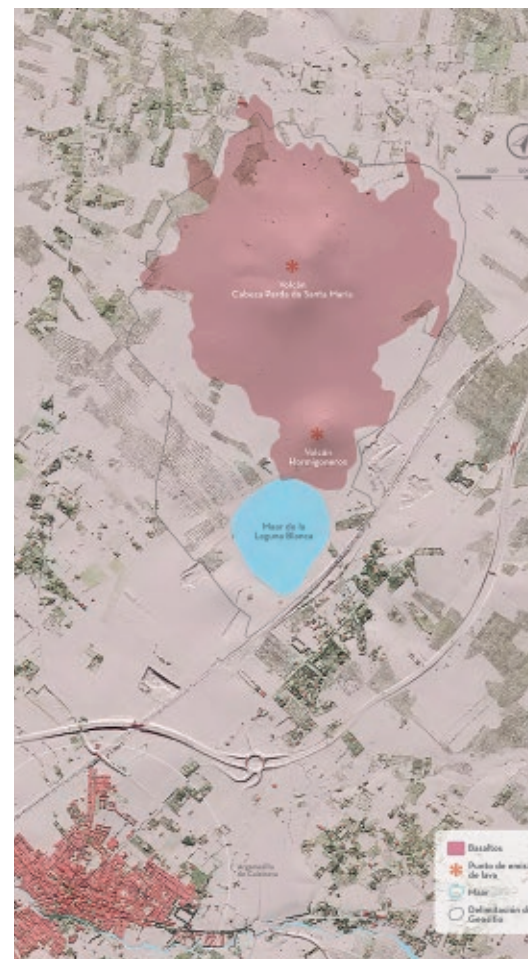
This complex is formed by a maar (Laguna Blanca) and a strombolian volcano (Cabeza Parda-Hormigoneros) with a head-shaped morphology ("cabezo"), the most typical of these buildings in the area; it is one of the largest pyroclastic cones in Campo de Calatrava. (Fig.1).

The maar of Laguna Blanca is a magnificent example of a maar (Fig. 2). Maars are the result of a hydromagmatic eruption when a magmatic heat source interacts with water, forming a large explosion crater due to the pressure of the steam. It preserves a ring of tuffs composed of the products ejected in the eruption that lie directly on the falling pyroclasts from the two emitting centres that form the Cabeza Parda-Hormigoneros alignment.

Located to the NW of the lagoon is the Cabeza Parda de Santa María-Hormigoneros

strombolian volcanic complex (Fig. 3), possibly associated with two emission vents of the same eruption. These eruptive centres probably began their activity at the same time, building two separate volcanic cones at first, which, as the eruption progressed and new materials were added, developed a single morphology due to their juxtaposition. On the summit, two small depressions can be noticed, which possibly correspond to the disfigured remains of two craters. On the southeastern slope of Hormigoneros there is a fissure through which CO₂ is eventually emitted in sufficient quantity to prevent or slow down the normal development of vegetation and crops.

It is listed by the IGME as a Site of Geological Interest -LIG TM151- "Laguna Blanca and Volcano of Cabeza Parda" (QR).



Work derived from Mapa-LIDAR 2019 CC-BY 4.0 scne.es - Fig.1

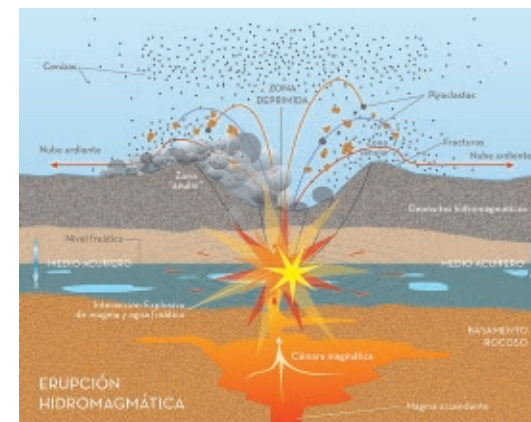


Fig. 2

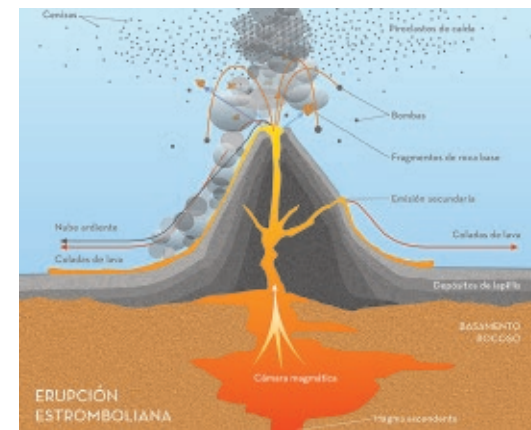


Fig. 3